

## ISWA's topics and themes of focus, 2010-2012

This short paper is to help the STC develop its future work programme by providing an overview of to-what-extent ISWA has covered different topics and themes through its various activities and projects during 2010-2012. The objective of which, is to identify the topics/themes that need more (or less) focus in the near future and to identify any gaps.

User data from the ISWA Knowledge Base has been collected to gain an insight into what information i.e. which topics and themes of waste management are currently being sought by the waste community. This is a rough guide as the analysis is quite short (5 months) and not everyone in the waste community is using the ISWA Knowledge Base as a key source of information. The analysis identifies that the major users of the KB are from parts of Europe and the USA, therefore the topics are not reflective of the information sought by other regions like parts of Asia, Middle East, Africa, Latin America etc.

A member survey would be another useful means to obtain an objective insight into which topics are of most interest.

ISWA's Scientific & Technical profile is based on:

### **Events**

World Congress, Beacon Conferences, Workshops, Joint events, meetings

### **Education and Training**

Study tours, master classes, summer school, training events

### **Publications**

ISWA Papers, Reports & Guidelines, WM&R

### **ISWA Knowledge Base**

Reports, presentations, guidelines, papers, videos

### **Projects**

ISWA Project Grant, WG projects, joint projects with International organisations

The table below gives an overview of the different activities and projects that ISWA has been engaged in during 2010-2012 specific to the themes covered by ISWA's 10 Working Groups and includes a couple of additional cross-cutting themes. Most of the activities & events were led by the WGs and/or STC but some were led by other bodies of ISWA such as the Board or GS.

The overview indicates that ISWA seems to be the most strong in the topics of Energy Recovery, Waste Minimisation & Recycling, and Globalisation  
Reasonably strong in Climate Change, Biological Treatment, Landfill, Hazardous and Healthcare waste.

Currently ISWA's strength is in events. However ISWA is developing in the areas of publications and projects especially with the recent support of the ISWA Project Grant.

## ISWA Activities &amp; Events by topic 2010-2012

	World Congress Sessions	Beacon Conferences	Workshop & Training	Projects	Documents in Knowledge Base	ISWA Papers, Reports & Guidelines	WM&R Articles/Special Issues (SI)
<b>Biological Treatment</b>	2012	2010 Perugia	Lithuania 2011 Turin 2012	ISWA Project Grant: Biowaste Workshops	ISWA: 199 non ISWA: 14  Total: 213	In preparation: Food waste Digestate & Sludge	Paper in World Congress SI
<b>Climate Change</b>	2012	2012 Copenhagen	Durban Workshop 2011 European Group 2011 & 2012	ISWA Project Grant: Communication Tools UN Global Partnership Waste Management	ISWA: 128 non ISWA: 10  Total: 138	Completed: In the Know (x2), 2011	-
<b>Collection &amp; Transport Tech.</b>	2010 2011 2012	-	Study tours 2011 & 2012	Wastepedia	ISWA: 66 non ISWA: 2  Total: 68	In preparation as part of Wastepedia	Paper in World Congress SI
<b>Communication</b>	2012	Papers at Beacon Conf. such as 2011 & 2012 Vienna	-	To raise the knowledge of the importance of using strategic communication in waste management	ISWA: 37 non ISWA: 3  Total: 40	-	-
<b>Energy Recovery</b>	2010 2011 2012	2011 Malmoe 2011 Novi Sad	Study tours 2011 & 2012	ISWA Project Grant: Preparing a Thermal Treatment Plant	ISWA: 194 non ISWA: 10  Total: 204	Completed 2012: WTE guide for emerging economies The guide on alternative technologies The state-of-the-art report	SI 2011
<b>Hazardous</b>	2012	2010, Novi Sad	Workshops, Singapore & Buenos Aires 2012 Iraq training 2011	ISWA Project Grant: Hazardous Waste Training Resources Pack (TRP+)	ISWA: 90 non ISWA: 9  Total: 99	Completed: TRP Project Report	Paper in World Congress SI
<b>Healthcare</b>	2012	-	Iraq training 2011	ISWA Project Grant: Blue Book	ISWA: 18 non ISWA: 5  Total: 23	In Preparation: Tender Guidelines Alternative Technologies guidelines Anatomical Waste paper	SI 2012 Paper in World Congress SI

<b>Landfill</b>	2010 2011 2012	2012 Angola	Master Classes Portugal, 2012	ISWA Project Grant x2: Landfill guidelines for tropical conditions ISWA Beacon Conf. Lobito, Angola	ISWA: 138 non ISWA: 11  Total: 149	Completed 2011: Sustainable Landfill guidelines In preparation: SoN Report Landfill mining	Paper in World Congress SI
<b>Legal</b>		<i>2010, Novi Sad (PPP)</i>	Presentation at EU Group Workshop 2011		ISWA: 53 non ISWA: 8  Total: 61	In preparation: Paper on PPP	
<b>Minimisation &amp; Recycling</b>	2012	2010 Singapore 2010 Leeuwarden 2011 Vienna 2012 Vienna 2011 Buenos Aires <i>2011 Novi Sad</i>		ISWA Project Grant x 2: Product Chain Management Recycling in Balkan & Med.  UNEP project: Recycling in SEE	ISWA: 281 non ISWA: 42  Total: 313	Completed 2011: Trafficking paper Waste Prevention paper	EPR 2011 Paper in World Congress SI
<b>Globalisation</b>		<i>2011 Buenos Aires 2012 Singapore</i>	Buenos Aires Workshop 2011	Megacities Informal Sector Glob. Recycling markets & trafficking International coop.	ISWA: 20 non ISWA: 2  Total: 22	Completed 2012: Report In preparation: 3 studies	2 Paper's in World Congress SI
<b>Waste Management Planning &amp; Finance</b>			2012 ISWA Summer School	ISWA Project Grant: Guidelines for SWM Plans Waste Fee guidelines	ISWA: 18 non ISWA: 27  Total: 45	Completed: Guidelines for SWM Plans, 2012 Waste Fee guidelines ,2011	
<b>IWM</b>	n/a	n/a	Workshops across Latin America	ISWA Project Grant: Latin America Cooperation projects: UK and Nigeria	n/a	n/a	n/a

## Knowledge Base Statistics, 2012

### Most popular documents

The table below identifies the most popular documents of the Knowledge Base from May- August.

MAY		JUNE		JULY		AUGUST	
Key issue paper waste prevention	41	Key issue paper waste prevention	54	Guidelines for implementation of successful Sustainable Waste Management Plans	127	Globalisation & Waste Management TFG Report	210
ISWA Position Paper on Working Conditions for Waste Collectors	23	Guidelines for implementation of successful Sustainable Waste Management Plans	38	Guidelines on how to design an appropriate waste fee	46	ISWA Standards for sustainable events	122
ISWA Position Paper on Waste Trafficking	20	Assessment of the options to improve the management of bio-waste in the European Union	22	Management of Bottom Ash	41	Management of Bottom Ash	65
From Waste to Resource: World Waste Survey 2009	18	ISWA Annual Report 2011	20	Annual Report 2011	21	Guidelines for implementation of successful Sustainable Waste Management Plans	58
ISWA 10 Years Perspective on Waste Management 2005	17	Being wise with waste: the EU's approach to waste management	19	Key issue paper waste prevention	18	ISWA Annual Report 2012	32
Composting of Organic Waste - Technologies, Decentralized Solutions, Costs	17	Waste opportunities Past and future climate benefits from better municipal waste management in Europe	16	Food waste as global issue	18	Energy from Waste, State-of-the-Art-Report 5th Edition	28

“Waste To Energy: An Integral Part of Sustainable Waste Management”	17	In the Know - Briefing Note on Climate Change & Waste Management. ISWA GRANT PROJECT	15	Energy from Waste, State-of-the-Art-Report 5th Edition	17	ISWA Position Paper on handling of APC residues	22
ISWA State of the Art, Waste to Energy Report	16	In the Know - Brochure on Climate Change & Waste Management. ISWA GRANT PROJECT	14	The EU Waste Framework Directive Ambition, Implementation and cross boarder perspective	16	Guidelines on how to design an appropriate waste fee	21
Strategies and treatment options to meet the EU Landfill Directive diversion targets	16	Guidelines on how to design an appropriate waste fee	11	Efficient and Sustainable Waste Management in Cities – Example Vienna	15	ISWA Annual Report 2011	15
Landfill Gas Handbook Manual	14					Which is the best solution?: The option of Landfills	15

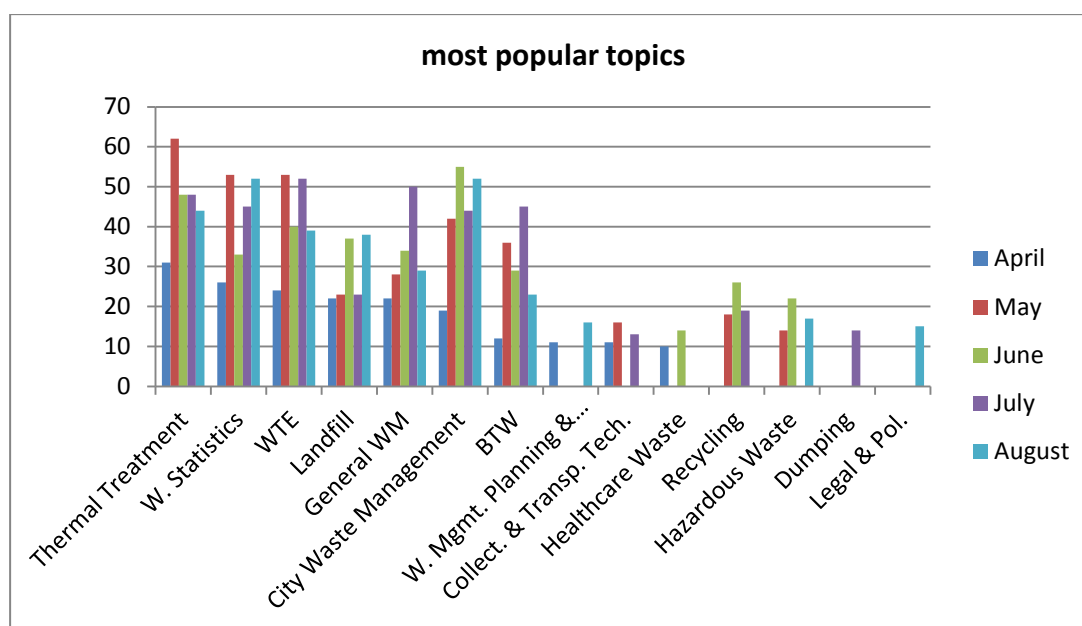
Some of the documents are only popular in a given month, whereas a few documents (those in colour) have been popular for 2 or more months in a row. The documents cover a wide range of topics and are mostly all ISWA documents. Some of the popular documents are new documents such as the SWM Guidelines, Waste Fee guidelines and Globalisation Report whereas some are older, such as the Management of Bottom Ash and Energy from Waste reports which are around 6 years old. In general the ISWA papers, reports and guidelines are the most popular; the Working Groups should be encouraged to continue writing good quality and topical papers. The development of guidelines and papers funded by the ISWA project grant are also proving to be popular, indicating the success of these projects.

## Most popular topics

There are 24 different topics covered in the Knowledge Base, they include:

Biological Treatment of Waste, City Waste Management, Collection & Transport Technology, Communication, Disaster Waste Management, Dumping, Energy Recovery, GHG, Climate & LCA, Globalisation & waste management, Hazardous Waste, Healthcare Waste, Incineration/thermal treatment, Landfill, Legal & Policy Issues, Product Chain Management, Recycling, Resource Efficiency, Reuse, Sorting, Trafficking, Waste Management (General), Waste Management Planning & Finance, Waste Minimisation, and Waste Statistics.

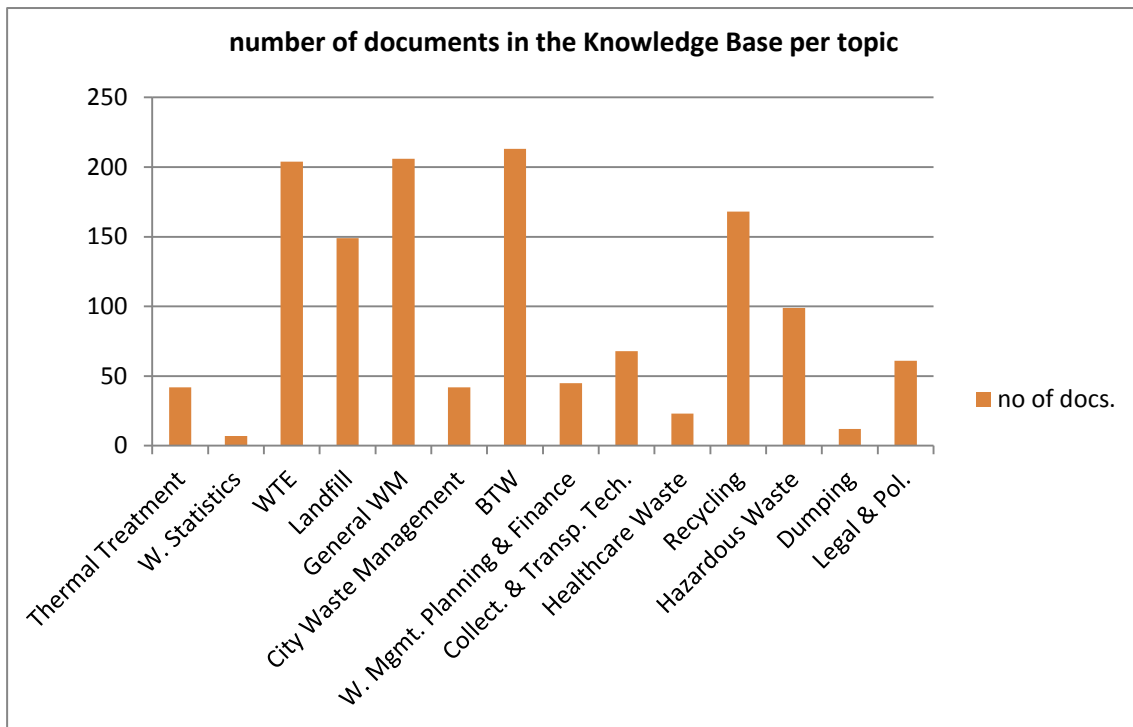
The most popular of these topics are shown below:



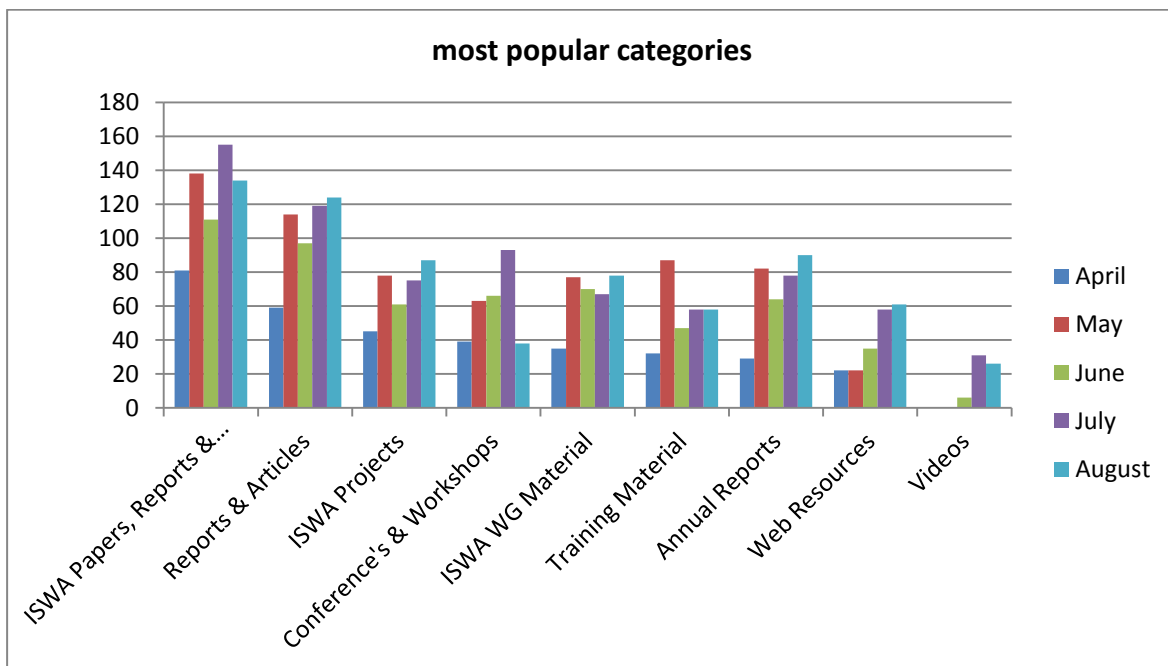
There is some variation on which topics are the most popular from month to month, but some topics are consistently popular such as Thermal Treatment/Incineration, Waste Statistics, Waste to Energy, Landfilling, Waste Management in general, City Waste Management and Biological Treatment of waste.

If we compare the KB topics of interest with the focus activities of ISWA, topics such as Waste Prevention, Climate Change and Globalisation are not indicated amongst the most popular topics of KB users (although as globalisation is a broad cross cutting theme it is partly covered also under other topics such as city waste management). Specific documents from these topic areas have however been very popular such as the ISWA Paper on Waste Prevention, the in the know brochure and the TF Globalisation Report.

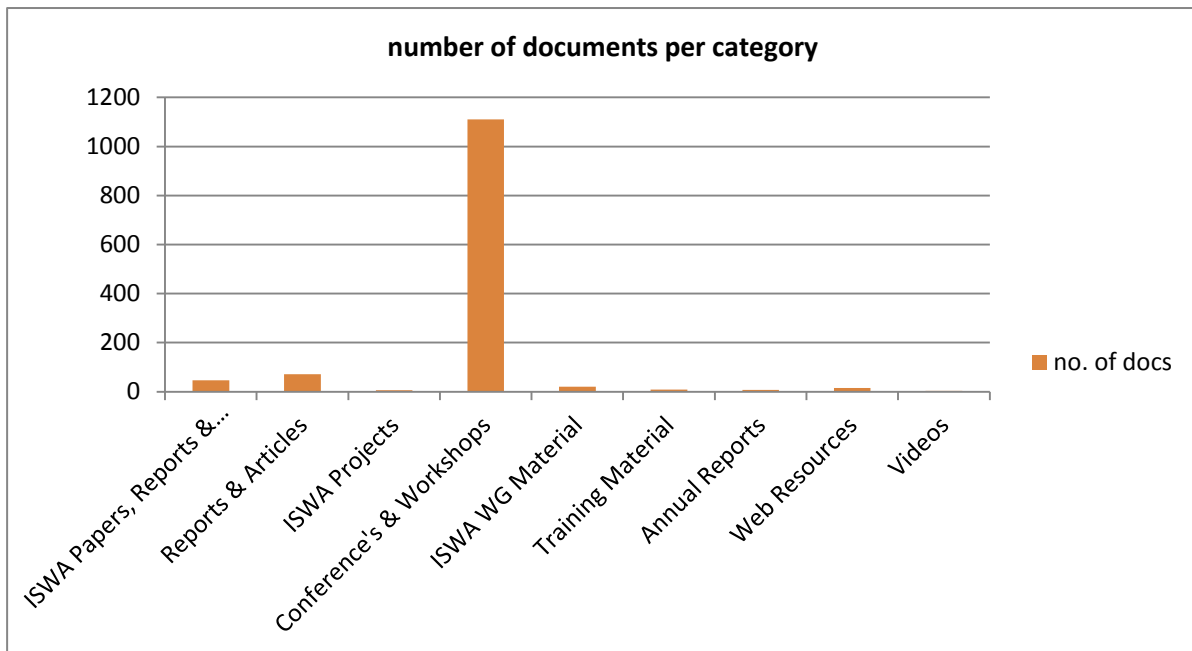
There are only a couple of popular topics of the Knowledge Base that ISWA has not been so active in such as Waste Statistics & City waste management.



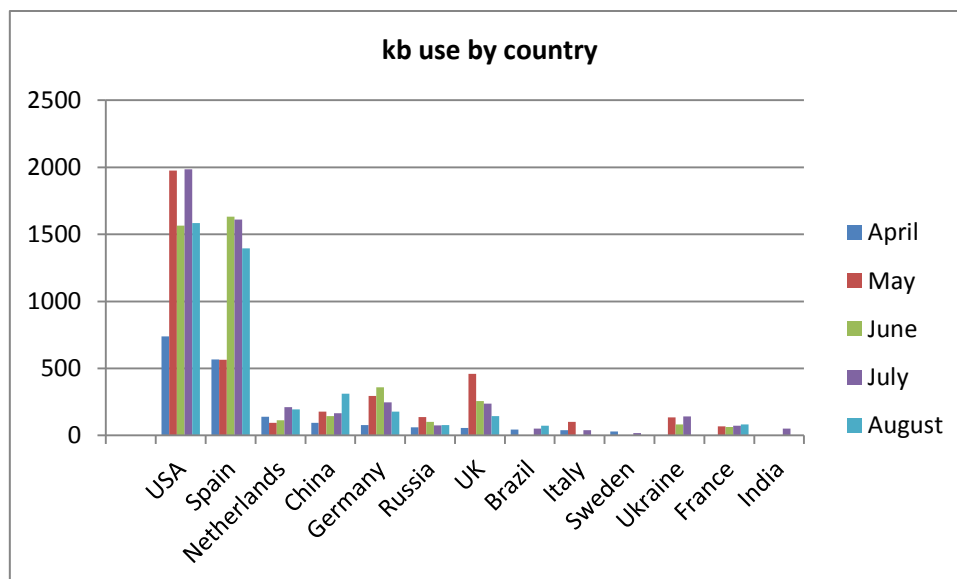
There is no connection with the number of documents available and the popularity of a topic. For example two of the most popular topics in the KB are thermal treatment/incineration and waste statistics, even though relatively few documents are available. This table indicates the topics of the KB that need to be fed with more documents (i.e. especially those below 50).



The category "ISWA papers, reports & guidelines" can be accessed without registration, which may be part of the reason that it is the most popular category. The second most popular category is non ISWA Reports & Articles.



This graph shows that the most common document type in the KB is Conferences and Workshops (although it is only the 4<sup>th</sup> most popular category). Although some categories are indicated as zero, there are documents just the scale is too large for them to register (see graph above). ISWA should develop more papers, reports and guidelines as this is the most popular category. There are currently 47 documents in this category.



The KB is currently mostly used by people in USA and Spain. More needs to be done to promote the Knowledge Base in other regions, particularly in regions like Africa, Latin America, Middle East and also the BRIC region (Brazil, India and China). As a starting point the GS will encourage the National Members to put a link to the KB on their websites.

Because mostly only parts of Europe and the US are using the KB, we only have an indication of the topics of interest for these regions. Currently documents from 8 different languages are included in the KB, however predominantly the documents are in English.



## Conclusions

The priority themes and topics identified by the STC 2010-2012 programme included:

- Climate Change (GHGs) and Sustainable Waste Management
- Globalisation & Waste Management
- Waste Prevention & Recycling
- Waste Trafficking
- Sustainable Landfills
- SWM planning

The actual activities of ISWA 2010-2012 were most strongly focused on:

- Energy Recovery
- Waste Minimisation & Recycling
- Globalisation & Waste Management
- Climate Change (GHGs) and Sustainable Waste Management

Other areas where ISWA's activities 2010-2012 were reasonably strong include Biological Treatment, Landfill, Hazardous and Healthcare.

ISWAs scientific and technical activities were mostly in connection with events and to a lesser extent projects and publications (as a result of the ISWA Project Grant). ISWA needs to strengthen its development of papers, reports and guidelines and involvement in projects.

The most popular topics indicated by KB users include:

- Thermal Treatment/Incineration
- Waste Statistics
- Waste to Energy
- Landfill
- Waste Management in general
- City Waste Management
- Biological Treatment of waste.

Of these topics ISWA is the most strong in Thermal Treatment and Waste to Energy.

Although the use details of the KB indicate some priority topics it is not reflective of the whole globe and not very reflective of the information needed by transitional and developing regions. A Member survey or stakeholder meeting could help ISWA and the STC to develop a better understanding of the important topics for ISWA to develop its Scientific & Technical Profile around.